



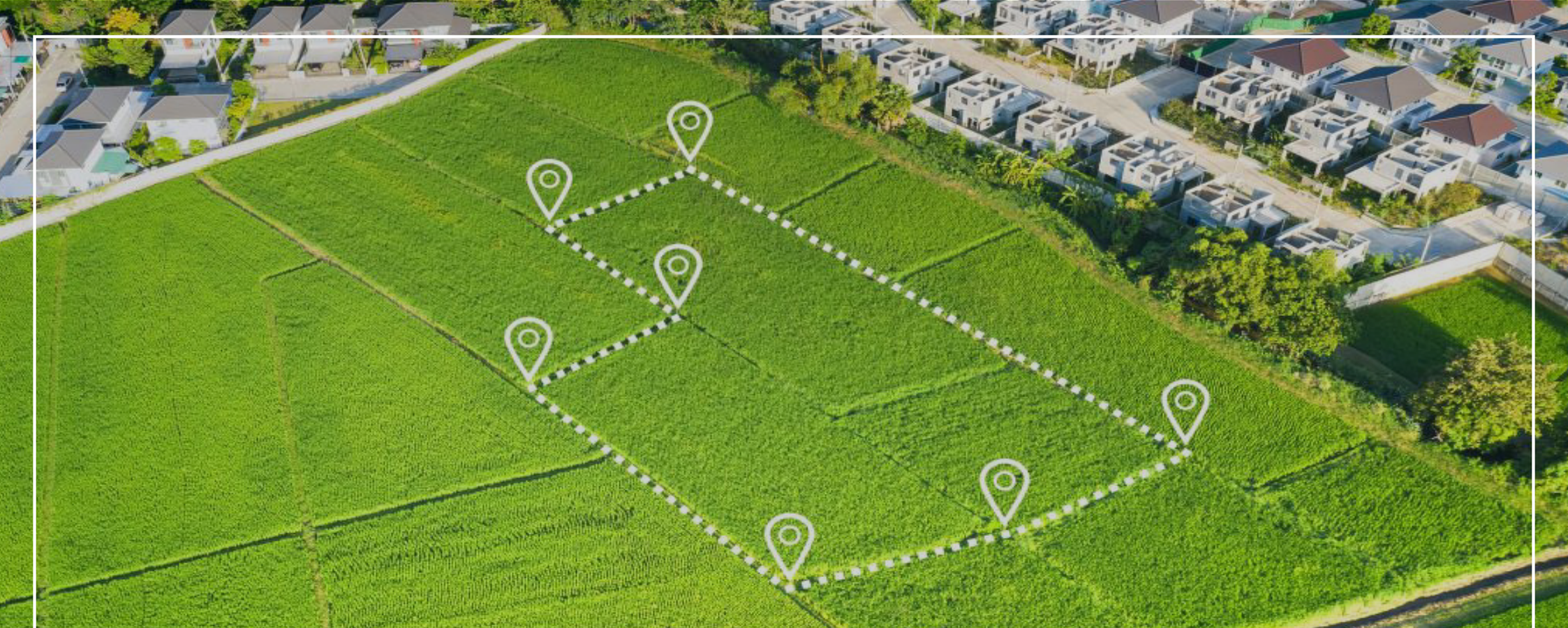
Amtala

Housing Complex

COME BUILD YOUR DREAM HOME

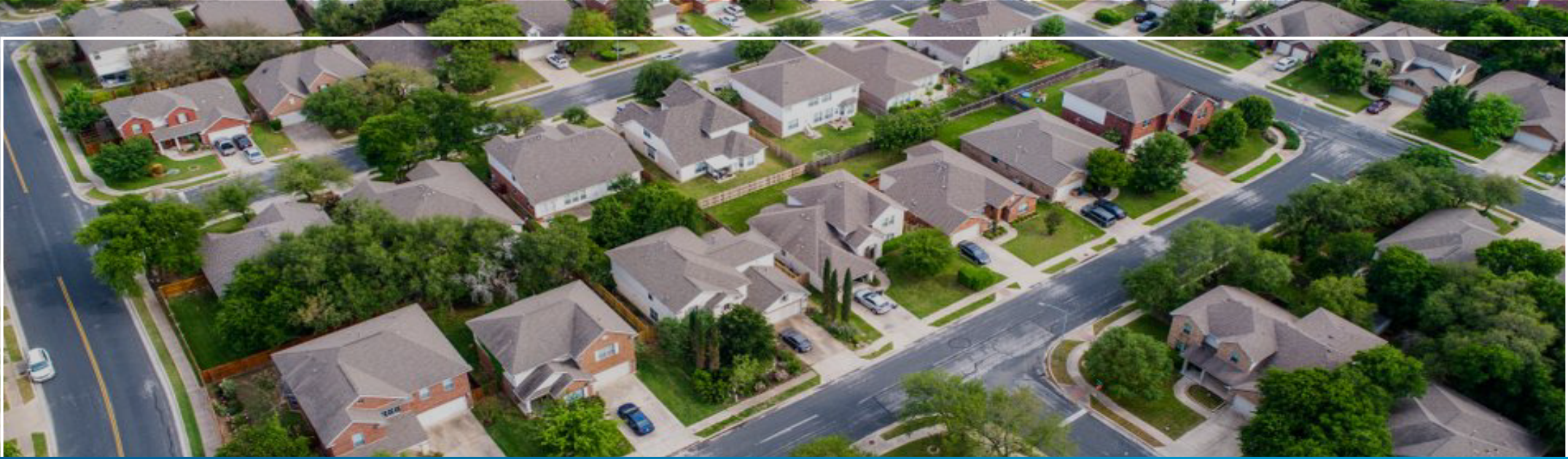
DEVELOPED BY





ABOUT THE COMPANY

Manafuli Developers, a land development company under the Manafuli Group, has emerged as a fast-growing company in West Bengal. Since our inception, we've been designing and developing projects that add value and offer great returns to our customers and investors. We offer a wide spectrum of services from land development of plots, commercial buildings to affordable housing, villas and industrial parks. At **Manafuli Developers**, we believe in creating communities that make Happy Hearts.



ABOUT THE PROJECT

Amtala Housing Complex is Amtala's biggest, self sufficient and integrated township. The nature-centric project is aggregating approx 50 Bighas, co-designed and landscaped by young architects from Studio of Cosmopolitan Architecture. After the overwhelming success of Phase I, II and III Manafuli Developers opens its door to East Phase spread over 7.5 Bighas of land with only 47 plots.

The **Amtala Housing Complex - East Phase** is a place where you can enjoy peace and solitude, yet have all the benefits of the city at your fingertips. Featuring the lush greenery of nature, this residential community offers a leisurely life and it's designed to bring your mind at ease. This place offers good connectivity to modern amenities such as schools, banks, ATMs, hospitals, and so on. Because of its close proximity to the city, you can enjoy all the benefits of urban life while still having the peace and tranquility of a small town.



LET'S JOIN HANDS TO MAKE

YOUR DREAM HOME A REALITY.

"Amar Bari"... "Mera Ghar"... "My Home", is every person's dream!

Every house is a dream made up of years of toil and hard work. We are committed towards our vision of helping others to fulfill their dream in the best way possible. The **Amtala Housing Complex "East Phase"** is dedicated to offering the best quality homes at the most affordable prices with all amenities you need to make your life comfortable.

We understand that the entire process of building a house, from land purchase to construction and then finally moving into your dream home can be quite overwhelming. The entire construction of custom-built houses will be undertaken by us, built to your exact specifications and design as per your requirement, under the supervision of our experienced team.

HOUSE NUMBER A 42

At Amtala Housing Complex (Phase I)



UNDER CONSTRUCTION



COMPLETE



HOUSE NUMBER A 10/1

At Amtala Housing Complex (Phase I)



UNDER CONSTRUCTION



COMPLETE



LOCATION ADVANTAGES



9 Kms

Metro Route
(Joka to BBD Bag)



1 Kms

Baazar Kolkata



3 Kms

Bishnupur
Police Station

KOLKATA,
WEST BENGAL

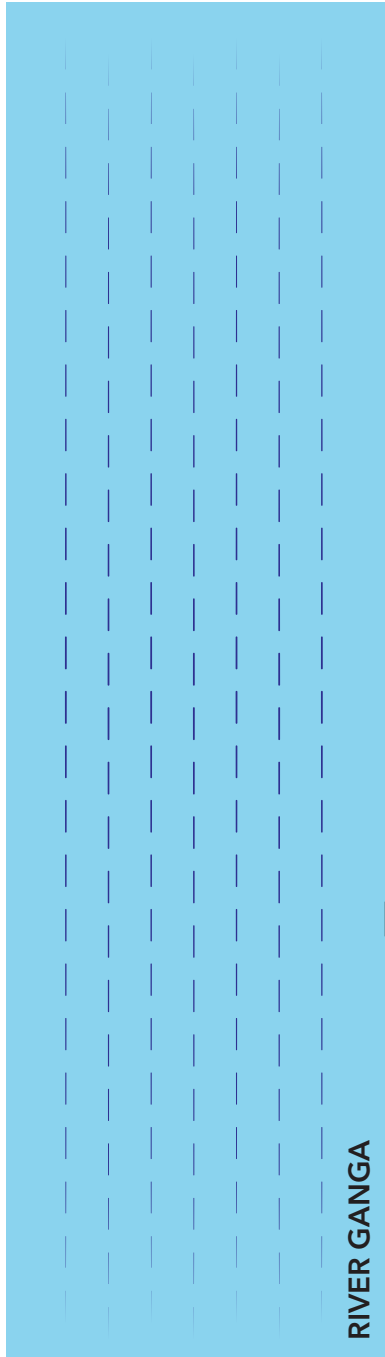
NORTH



MANAFULI
INDUSTRIAL PARK BAGANAN

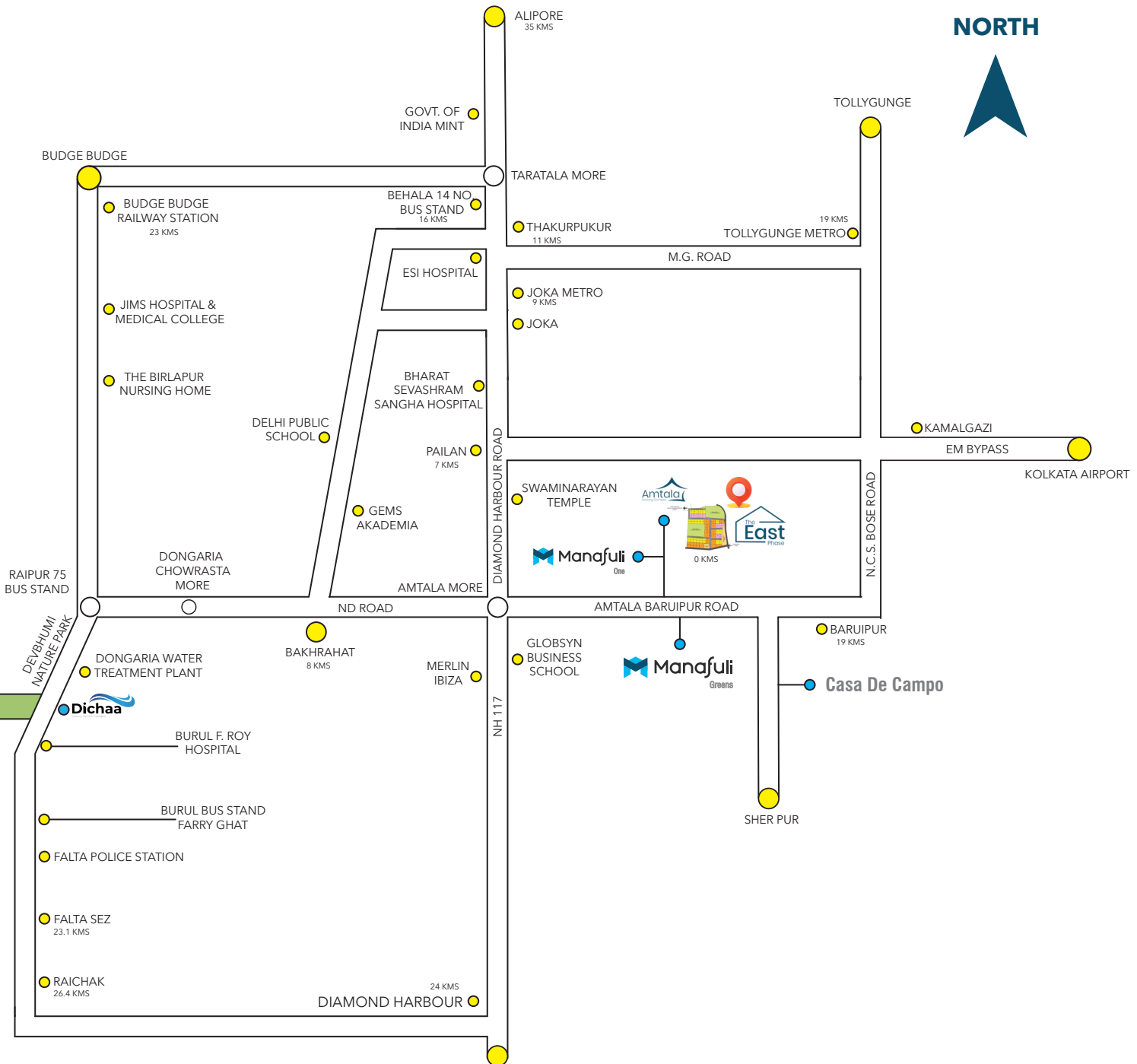
NATIONAL HIGHWAY 6

HOWRAH DISTRICT



RIVER GANGA

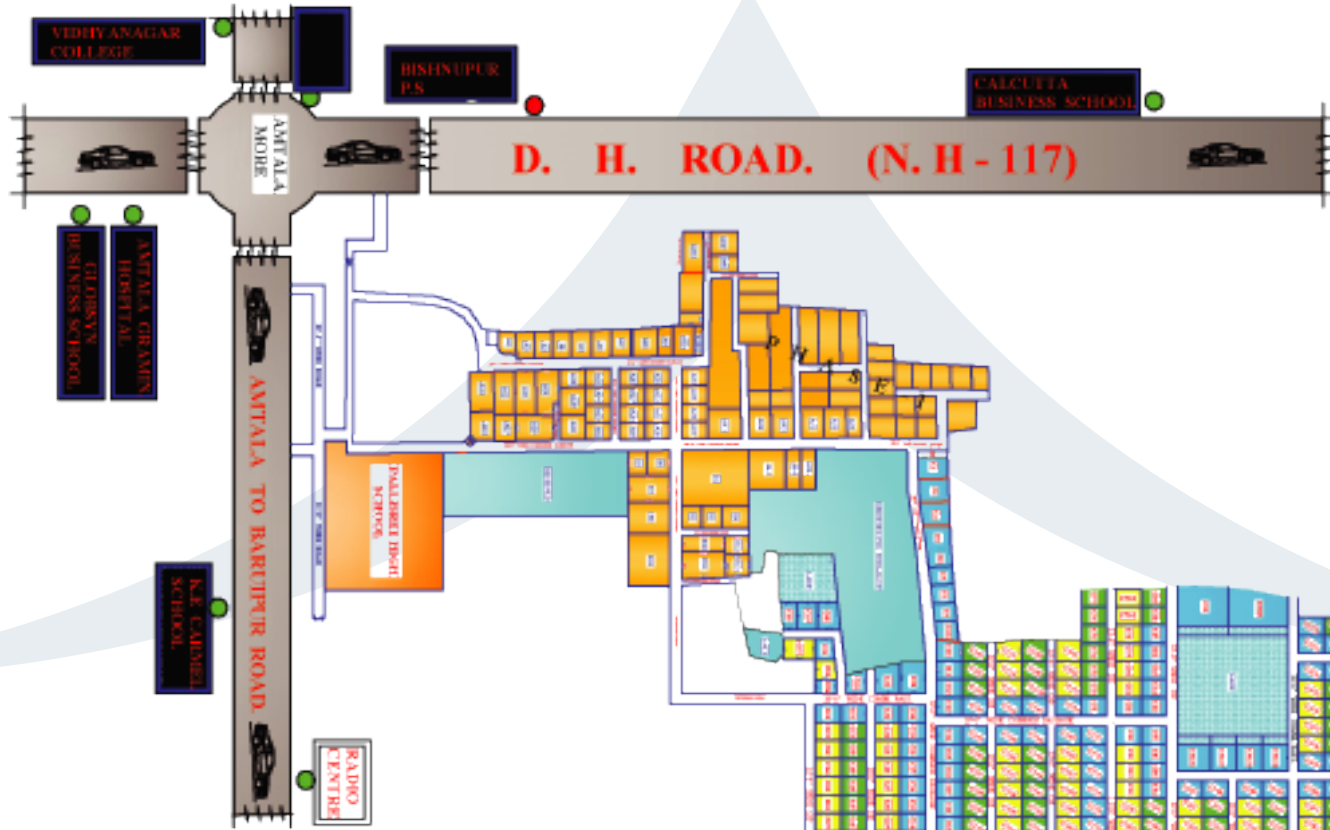
TOWARDS
JHARKHAND



PROJECT DEVELOPMENT

Actual Onsite Photographs





CONNECTION BETWEEN



OUR NEIGHBOURHOOD



BANKS & ATMS

- State Bank Of India
- Punjab National Bank
- Axis Bank
- Bank of Baroda

20 More Banks & ATMs



SCHOOLS & COLLEGES

- Pollishree High School
- KE Carmel
- Mount Litera
- Nibedita

& Many More...



HOSPITAL & HEALTH

- Bharat Sevashram Hospital
- Amtala Gramin Hospital



PETROL PUMPS

- Bharat Petroleum
- Indian Oil Petrol Pump
- HP Petrol Pump

NEARBY PLACES



Swami Narayan Temple



Picnic Spots



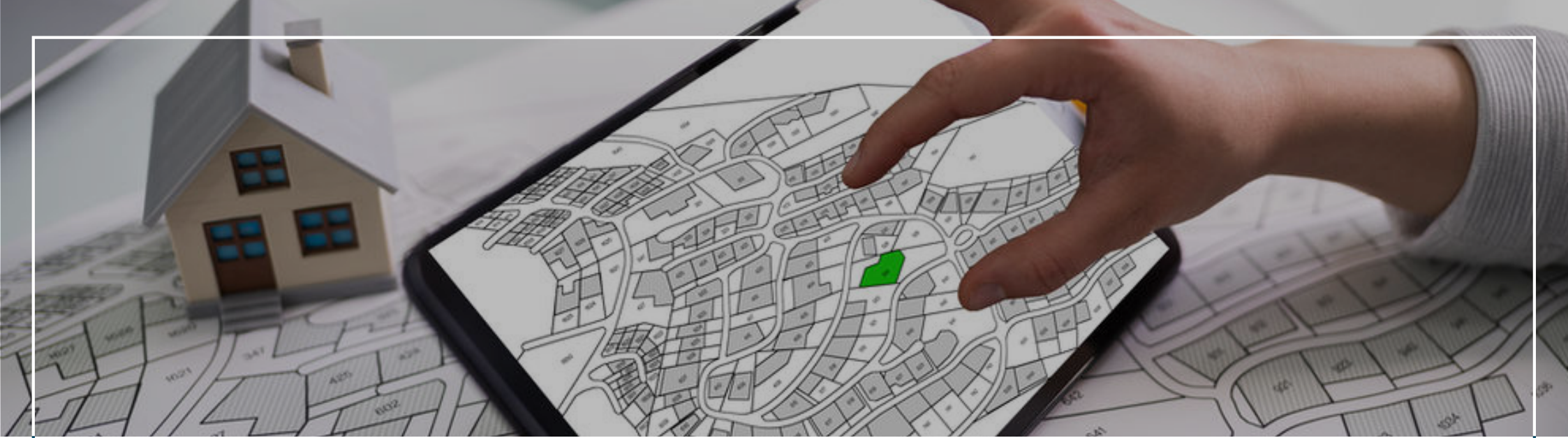
Pailan World School



Joka to BBD Metro



YOUR DREAM HOME IS WAITING FOR YOU...



COMPLETED PROJECTS



ONGOING PROJECTS



UPCOMING PROJECTS





Amtala

Housing Complex

Come Build your Dream home

MARKETING OFFICE

 **Manafuli**
Developers

56/1D, Santosh Roy Road, James Long crossing, Sakher Bazaar, Near Jiban Tori Villa, Kolkata - 700008.

Reg. Office : Baruipur Road, Amtala, Bishnupur, South 24 Prgs - 743398.

E: ajay@manafuli.in C: +91 987 407 6910 | www.manafuligroup.com | www.manafulideveloper.com

Disclaimer : It is expressly and unequivocally clarified that the information, illustrations and visual representation contained in the brochure is only indicative of the kind of the development i.e. proposed in Amtala Housing Complex and is intended to provide a general information and shall not constitute as part of an offer, invitation, solicitation or sale of any product offerings. It is issued in good faith and is for guidance only. All plans, specifications and features depicted in the Brochure are tentative and are subject to sanction/modification by the concerned sanction authority without prior notice/or obligations. All visual representation shown herein is/are purely conceptual and precise appearance may vary. This material is for customers reference only and the company reserves their right to alter or delete any material from the Brochure at any time. T&C Apply. Excludes utilities, Govt. charges. Validity subject to Plot chosen.